



Holly Mount, Hampstead NW3
£1,795,000 Freehold



Holly Mount Hampstead NW3

An exquisite three bedroom Grade II listed cottage, with a discreet garden, set within a 200-year-old walled courtyard, in a beautiful Hampstead Village setting

The property has been refurbished with great care and attention to detail and retains beautiful period features. Situated in the heart of old Hampstead Village, neighbourhood restaurants & cafes, delicatessens, shops & boutiques are just moments away; Hampstead Heath is a short stroll.

18'10 reception • 3 bedrooms • 2 shower rooms • kitchen • 2 store rooms
• residents permit parking • EPC E

Hampstead Underground station (Northern Line) is less than a 2 minute walk and Hampstead Heath Overground Station is approximately a 12 minute walk.

£1,795,000 Freehold

Telephone 020 7794 7794





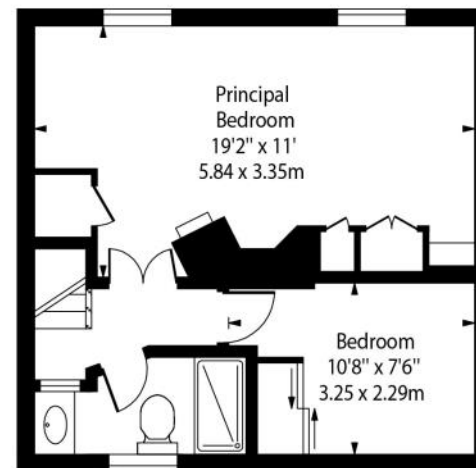
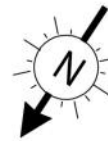
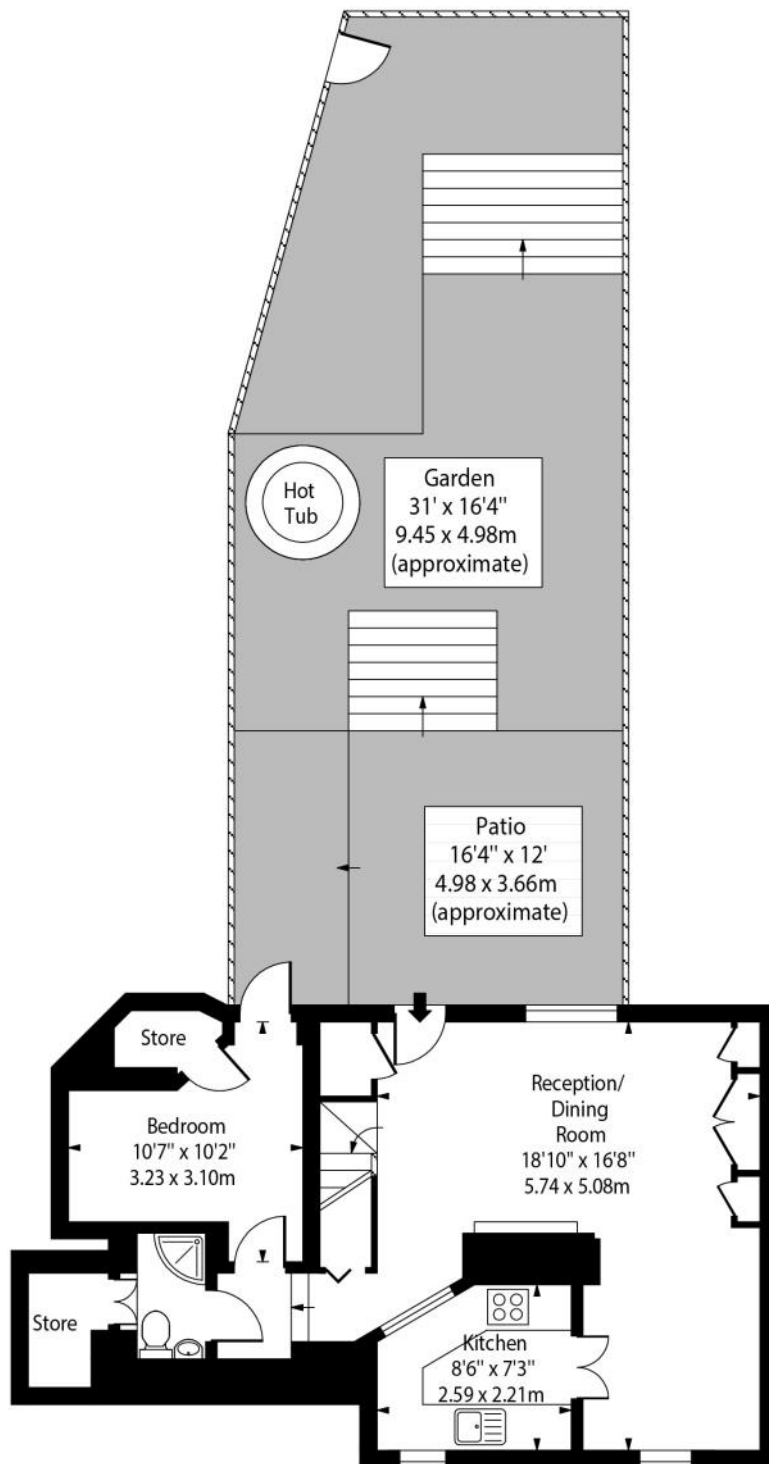












Approx. Gross Internal Area
873 Sq Ft - 81.10 Sq M

For Illustration Purposes Only - Not to Scale
 This floor plan should be used as a general outline for guidance only. Any intending purchaser or lessee should satisfy themselves by inspection, searches, enquiries and full survey as to the correctness of each statement. Any areas, measurements or distances quoted are approximate and should not be used to value a property or be the basis of any sale or let.

Score	Energy rating	Current	Potential
92+	A		
81-91	B		
69-80	C		72 C
55-68	D		
39-54	E	47 E	
21-38	F		
1-20	G		



Telephone 020 7794 7794



6 South Hill Park, London NW3 2SB | lettings@amberden.co.uk